

EPL 50-155 Reihe • EPL 50-155 Series

Technische Daten • Technical data

Typ [type]		Untersetzung [ratio]	EPL 50	EPL 70	EPL 90	EPL 120	EPL 155
Untersetzung [ratio]		1-stufig [1-stage]	3/4/5/7/10				
		2-stufig [2-stage]	9/12/16/20/25/35/40/49/50/70/100				
		3-stufig [3-stage]	120/160/200/250/350/500/700/1000				
Nenn Drehmoment am Abtrieb ¹⁾ [nominal output torque]	Nm	3	5	20	40	100	230
		4/5/7	6.5	26	54	120	310
		10	5	16	40	105	180
		12	10	36	80	170	360
		16/20/40/70	14	42	100	210	340
		25/35/50	12	44	100	210	340
		100	6	18	64	165	190
		120/160/200	14	42	100	210	340
		250/350/500	14	44	100	210	340
		700	12	42	100	210	340
1000		25	64	165	190		
max. Beschleunigungs- moment ¹⁾ [max. acceleration torque]	Nm	3	10	36	70	180	360
		4/5/7	13	44	100	200	460
		10	8	24	75	180	340
		12	12.5	45	100	215	360
		16/20/40/70	17.5	52	125	255	460
		25/35/50	14	55	125	255	460
		100	9	28	80	180	340
		120/160/200	17.5	52	125	255	500
		250/350/500	17.5	55	125	255	500
		700	14	52	125	255	500
1000	9	28	80	180	340		
NOT-AUS Moment ²⁾ [emergency torque]	Nm	3	20	72	160	200	860
		4/5/7	26	84	216	480	1000
		10	20	62	160	410	800
		12	20	72	160	400	860
		16/20/40/70	26	84	216	480	1000
		25/35/50	26	84	216	480	1000
		100	20	62	160	410	800
		120/160/200/250/350/500/700	26	84	216	480	1000
1000	20	62	160	410	800		
zulässige mittlere Drehzahl ³⁾ [allowed nominal speed]	1/min		3500	3500	3000	2500	2500
max. Drehzahl [max speed] ³⁾	1/min		6000	6000	6000	5000	4500
Verdrehspiel [backlash]	arcmin	1-stufig [1-stage]	<20	<10	<10	<8	<8
		reduziert [reduced]	<10	<7	<6	<6	<6
		2-stufig [2-stage]	<24	<14	<14	<12	<12
		reduziert [reduced]	<14	<9	<8	<8	<8
		3-stufig [3-stage]	<30	<18	<18	<16	<16
		reduziert [reduced]	<18	<11	<10	<10	<10

Typ [type]		Untersetzung [ratio]	EPL 50	EPL 70	EPL 90	EPL 120	EPL 155
max. Radialkraft [max. radial load] ⁴⁾	N		650	1550	2400	4600	7500
max. Axialkraft [max. axial load] ⁴⁾	N		700	1450	1900	4000	6000
Verdrehsteifigkeit [torsional stiffness]	Nm/arcmin	10/100/1000	0,87	1.38	3.35	10.85	20.08
		7/70/700	0.79	2.17	6.04	17.61	30.46
		andere [other]	0.91	2.68	7.1	19.5	39.5
Gewicht [weight]	kg	1-stufig [1-stage]	0.4	1.0	2.4	6.0	10
		2-stufig [2-stage]	0.5	1.3	3.2	8.1	12.5
		3-stufig [3-stage]	0.6	1.6	4.0	10.2	15
Massenträgheitsmoment bezogen auf den Antrieb [mass moment of inertia]	kgcm ²	3	0.06	0.45	1.37	6.54	12.23
		4/12/16	0.04	0.38	1.14	4.8	7.65
		5/20/25	0.04	0.36	1.05	4.05	6.24
		7/35	0.04	0.35	0.97	3.4	4.7
		10/40/50/70/100	0.04	0.34	0.93	3.1	3.8
120 - 1000			0.34	0.93	3.12	3.9	
Laufgeräusch ⁵⁾ [operating noise]	dB(A)		<62	<62	<64	<67	<70
Wirkungsgrad (Vollast) [efficiency at load]	1-stufig [1-stage] 94% 2-stufig [2-stage] 92% 3-stufig [3-stage] 90%						
Lebensdauer [service life]	> 30000 Std. [h]						
Schmierung [lubrication]	Lebensdauerschmierung [lifetime lubrication]						
Schutzart [protection rating]	IP 54						
Betriebstemperatur [operating temperature range]	-20 ° bis + 90 ° C						

¹⁾ Bezogen auf n1=3000 1/min und S1-Betriebsart [Value refer to n1=3000 1/min and S1-mode]

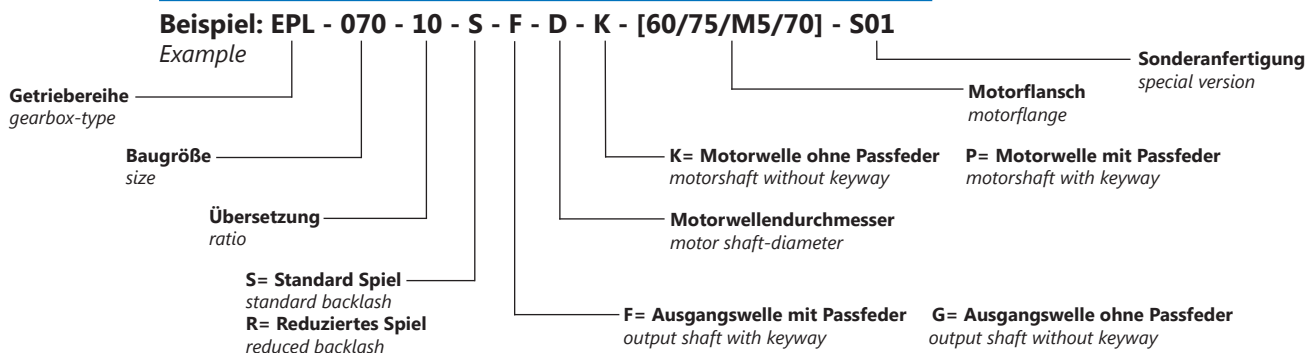
²⁾ 500-mal zulässig [allowed 500 times]

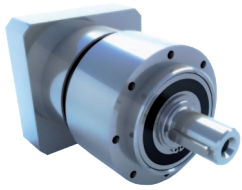
³⁾ zul. Betriebstemperatur darf nicht überschritten werden [Allowable operation temperature must be kept]

⁴⁾ Bezogen auf n2=100 1/min Lebensdauer >10.000 Std [Refer to n2=100 1/min lifetime 10.000 hours]

⁵⁾ Gemessen in 1mtr. Abstand bei n1=3000 1/min [Measured in 1mtr. distance at n1=3000 1/min]

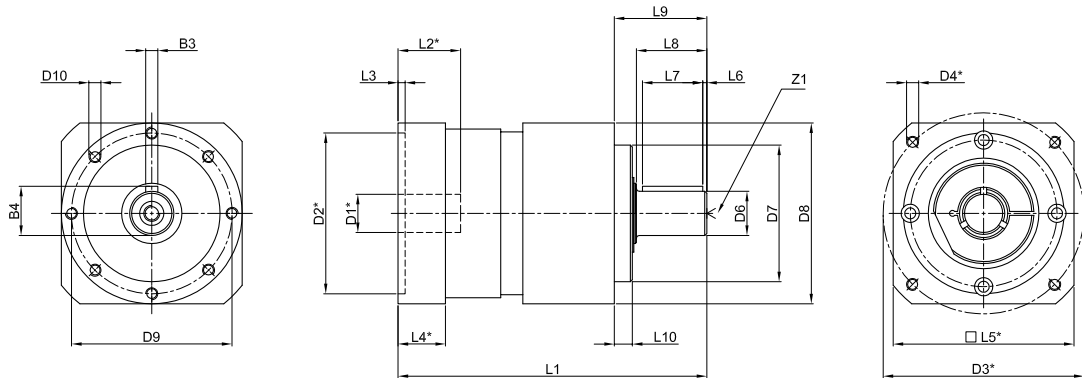
BESTELLBEISPIEL/TYPE CODE





EPL 50-155 Reihe • EPL 50-155 Series

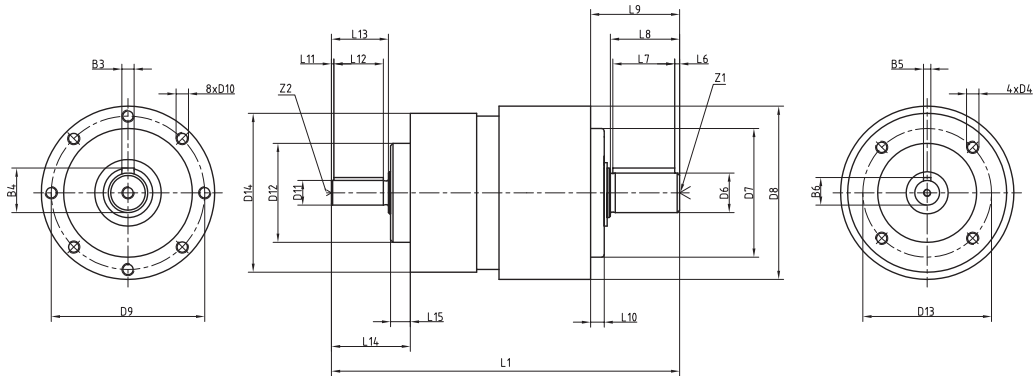
Abmessungen • Dimensions



*abhängig vom Motor
*depending on motor

Typ [type]	EPL 50			EPL 70			EPL 90			EPL 120			EPL 155			
Stufenzahl [stages]	1	2	3	1	2	3	1	2	3	1	2	3	1	2	3	
L3		3,2			3,5			3,5			4			4		
L4		20			20,5			23,5			26,5			36,5		
L5		50			70			90			120			140		
L6		1			2			2			4			6		
L7		16			25			30			50			70		
L8		18			28			35			58			82		
L9		24,5			36			46			70			94		
L10		4			5,5			9			7			5,5		
D1max		14			19			24			32			38		
D2		36 H7			50 G7			80 G7			110 G7			130 G7		
D3		55			65			100			130			165		
D4 (4x)		M4 x 10			M5 x 12			M6 x 12			M8 x 20			M10 x 25		
D6 k6		12			16			22			32			40		
D7 h6		35			52			68			90			120		
D8		50			70			90			118			155		
D9		44			62			80			108			140		
D10 (8x)		M4 x 6,5			M5 x 12			M6 x 14			M8 x 18			M10 x 24		
B3		4			5			6			10			12		
B4		13,5			18			24,5			35			43		
Z1		M4 x 14			M5 x 17			M8 x 25			M12 x 37			M16 x 45		
Ges.Länge [length]		L1			L1			L1			L1			L1		
Stufenzahl [stages]	1	2	3	1	2	3	1	2	3	1	2	3	1	2	3	
L2																
9*20mm	93	109	125	123	145	167										
11*23mm	96	112	128	123	145	167										
14*30mm				130	152	174	154	186	219							
19*40mm				140	162	184	164	196	229	212	253	294				
24*50mm							174	206	239	222	263	304	290	331	372	
32*60mm										232	273	314	300	341	382	
38*80mm													320	361	402	

Freie Antriebswelle • Free input shaft



Typ [type]	EPL 50			EPL 70			EPL 90			EPL 120			EPL 155		
Stufenzahl [stages]	1	2	3	1	2	3	1	2	3	1	2	3	1	2	3
L1	105	122,5	139	141	163	185	171	204	237	270	311	352	324	377	418
L6		1			2			2			4			6	
L7		16			25			30			50			70	
L8		18			28			35			58			82	
L9		24,5			36			46			70			94	
L10		4			5,5			9			7			5,5	
L11		2			1			3			5			5	
L12		12			20			22			45			45	
L13		16			23			28			55			55	
L14		21,8			32			37			66			66	
L15		5			8			8			10			10	
D4		M4 x 6,5			M5 x 12			M6 x 14			M8 x 18			M8 x 18	
D6		12 k6			16 k6			22 k6			32 k6			40 k6	
D7		35 h6			52 h6			68 h6			90 h6			120 h6	
D8		50			70			90			118			155	
D9		44			62			80			108			140	
D10		M4 x 8			M5 x 12			M6 x 14			M8 x 18			M10 x 24	
D11		8 k6			10 k6			16 k6			30 j6			30 j6	
D12		25 h6			40 h6			55 h6			80 h6			80 h6	
D13		33			52			70			100			100	
D14		50			64			84			118		150	118	118
B3		4			5			6			10			12	
B4		13,5			18			24,5			35			43	
B5		2			3			5			8			8	
B6		8,8			11,2			18			33			33	
Z1		M4 x 10			M5 x 17			M8 x 25			M12 x 37			M16 x 45	
Z2		M3 x 9			M3 x 9			M5 x 12			-		M10 x 30	-	-